



Softweb Technologies Pvt. Ltd.

# Driving Digital Transformation And Automation In An Enterprise



GET IN TOUCH

+91 8100710645

bd@softweb.co.in  
www.softweb.co.in

Corporate Office: "Trikut" 3rd & 4th Floors, 4C  
Lansdowne Place, Kolkata 700029, India





## ABOUT US INTRODUCTION

We, Softweb Technologies Private Limited, started our journey on August, 2000 as a sister concern to Warren Tea Ltd. In this journey of more than 23 years, Softweb Technologies Pvt Ltd has emerged itself as a premiere IT solution provider for a number of industries, including agro-plantation, manufacturing, retail, healthcare and lot more. Our indigenous solutions have been accepted by major industry experts. We have created solutions so specific to certain industries that we boast that no other industries have ever achieved the feat.

In 2019, we expanded our operations by opening our branch office at Dhaka, Bangladesh. Presently, the client base of Softweb Technologies Pvt Ltd. is spread across 2 continents, and more than 3 countries. More than 2 million users are using our apps and solutions regularly for their business.

Our expertise has made us develop the most indigenous software for agro-plantation business, bringing every section of labour industry under the gamut of technology.

Driven by the spirit of development, Softweb Technologies has spawned, several mission-critical solutions, important to sectors like agro-plantation, manufacturing, retail, healthcare, and many more.

Our solutions have made business organizations think beyond Enterprise Resource Planning (ERPs) and **embrace digitisation and automation seamlessly across their business operations.** We relentlessly delve into research and development to create a paperless environment.

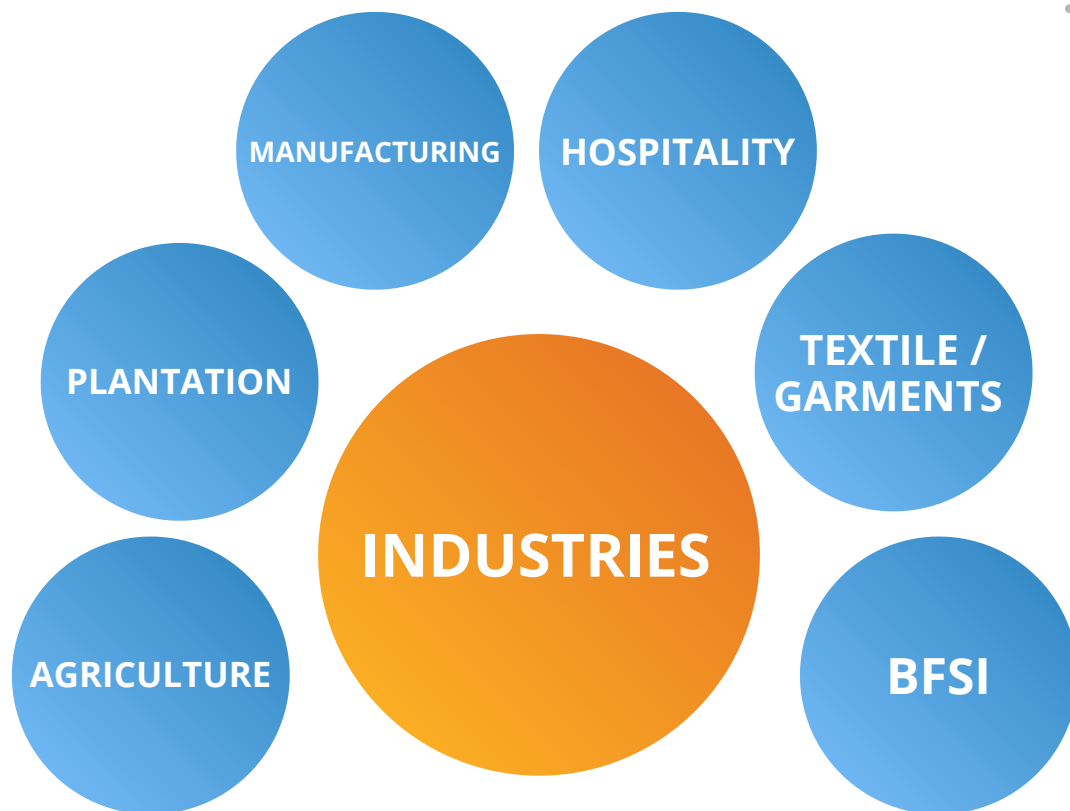
We, at Softweb Technologies, have also developed unique solutions based on computer vision and facial recognition, giving organizations huge opportunities in cost control.

In the world of Softweb Technologies, we seek to excel, by providing best of the solutions and services to our customers.



## OUR VISION

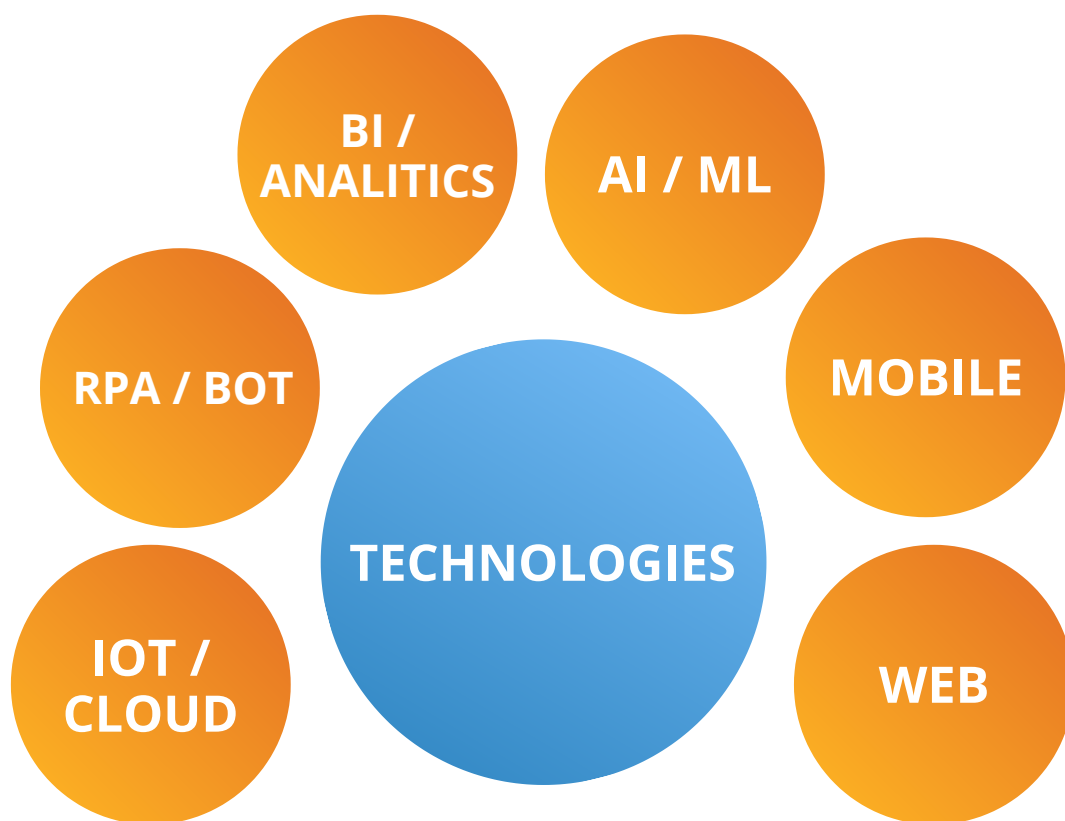
Our Vision is to be a technology leader in the IT solutions space while providing value to all our stakeholders.





## OUR MISSION

Our Vision is to be a technology leader in the IT solutions space while providing value to all our stakeholders.



# OUR SERVICES



## IT CONSULTING

Softweb Technologies plays a crucial role in helping business navigate the complex world of information technology. As Expert consultants we empower businesses to make informed decisions, optimize their IT infrastructure, digitise their operations moving towards an paperless environment, and drive business growth in this increasingly digital world. Our wide range of services includes, strategic planning, technological assessment, system integration, software development, cloud computing, data analytics, data management and IT project management.

Softweb Technologies has for last 23 years has partnered with major business units, to create tailored strategies, to address IT challenges and align technology initiatives with business objectives.

## SYSTEM INTEGRATION

System Integration plays a pivotal role in unlocking the full potential of your software integration. By seamlessly connecting and harmonizing various applications, business can streamline processes, enhance efficiency, and leverage the power of data-driven decision-making. As a software service provider, we are committed to helping the organizations realize the benefits of system integration by offering robust solutions, expert guidance, and ongoing support. Embrace the transformative power of system integration and propel your business to new heights of productivity and connectivity.

Softweb Technologies has been clearly defining goals with right integration approach for its clients creating a highly digitised and paperless work-space.

## CUSTOMISED SOFTWARE DEVELOPMENT

In today's highly competitive business landscape, organizations often faces operational challenges with off-the-shelf software products. Customized software development solutions provide a powerful means for business organisations to have a tailored, user-centric, and scalable products to meet regular operational necessities. Our expertise and collaborative approach have helped businesses to have softwares aligned to their business goals, processes and market demands.

Softweb Technologies through the years have developed tailor-made solutions, which are scalable as well as flexible giving a competitive-edge to its customers

# WHY **SOFTWEB**

**100  
Thousand+**

Users are benefitting  
with our solutions

**20+**

Industries like  
Tea, Coffee, Jute,  
Rubber, Palm Oil  
are using our solutions

**3 Million+**

Real-time  
Facial Recognition  
& Validation  
Per Month

**22+**

Years of Experience

**1 Million+**

Monthly Wages,  
PF & Payroll Processing

**50+**

IT Solutions  
like ERP, BOT,  
Process & business  
automation,  
Mobile Apps, Analytics  
and more...



- A strong workforce of over **60+ skilled professionals**
- Experience of over **two decades**
- Offices in 2 countries with **Partners across the Globe**
- Executed over **3000+ projects**



## CORE **VALUES**

**S**incerity in our work and attitude

**O**bsession with customer satisfaction and success

**F**inding Solutions for complex problems

**T**rust and Respect for all stakeholders

**W**orld leader in technological innovation

**E**mployee development, empowerment & satisfaction

**B**ringing Shareholder Value



# A leading **IT Solution Provider** in various industries



For more information visit: [WWW.SOFTWEB.CO.IN](http://WWW.SOFTWEB.CO.IN)



# COMPUTER VISION & FACIAL RECOGNITION TECHNOLOGY

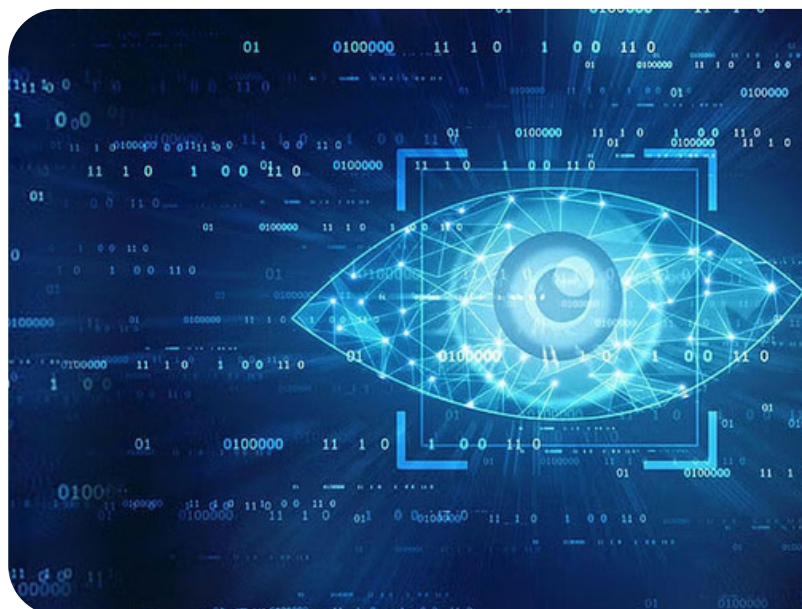
Computer Vision is the new age technology in the field of computer technology and artificial intelligence, empowering computers to analyse and interpret visual data, to gather important insights helping in strategic decisions.

Softweb Technologies is one of the pioneers in eastern India to work with computer vision and facial recognition technology. Softweb Technology has been successfully been providing computer vision based solutions across various industries, which in turn has made business organisations, more agile, paperless, productive and cost-effective, assisting in revenue growth for the organisation.

Computer vision enabled facial recognition has its applicability across all sectors. For manufacturing industries, computer vision can help in maintaining the consistency of the product, and report any deviation found with visual data. Moreover, the premises of production unit can also be secured with computer vision, generating real-time alerts on any unwarranted activity around secured areas.

The same computer vision technology, can help financial institutions to secure authentication and prevent fraud during any transactions. The process of videoKYC is gaining prominence and is gradually being made mandatory for all banking and NBFC institutions for quick customer registration and prevent fraud.

Travel and hospitality sectors has a number of benefits from computer vision based facial recognition technology. Facial recognition technology can make the check-ins in airports and hotels a much easy process. Even the security measures too can be romped up in the presence of any VIP guests or travellers.



Retail industries too enjoys a wide scope of facial recognition technology for optimum utilisation of their resources and ramp up their service. Understanding customer demographics (age, sex etc.) or identifying loyal customers for a more personalised service. Facial recognition technology and computer vision can bring a revolution in the retail industry.

Registering attendance in bulk for students or employees is a unique feature from computer vision based facial recognition attendance system. Educational institutions can easily register attendance of their students without involving any attendance registers and saving class hours.

Healthcare industry can utilise computer vision technology in creating a hassle free environment for registering their patients or clients. This will result in accurate record keeping of the patients and ensure authenticated data.

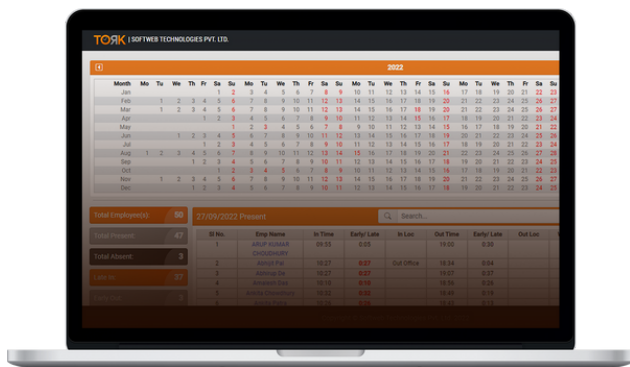
In coming days as artificial intelligence is gaining importance, Softweb Technologies is ready to embrace to the new technology and make it a viable and most-seeking technology for every industries across. Our constant research and development of solutions based on computer vision is already benefitting 20+ industries and many more are getting added with time. If you think computer vision technology for your business, think softweb Technologies.



## A SINGLE SOLUTION FOR ATTENDANCE & PAYROLL MANAGEMENT

TORK, an unique software developed by Softweb Technologies, is one stop solution for attendance and Payroll Management, no matter how much complex it is. TORK involves computer vision and facial recognition software, helping organisations to do away with any 'touch-based' attendance system, and additional hardware installation.

TORK empowers every employees to mark their self attendance, by simple selfie mode of camera. Even in the absence of smart-phone at the user end, TORK can be implemented in kiosk mode as well. This feature of helps organisations to capture bulk attendance in one go. This feature is beneficial to industries like manufacturing units where a large pool of both permanent and casual staff enters the premises during production hour.



Be it complex shift management, or a user-friendly dashboard, TORK has all features inbuilt to provide all users with necessary solutions for monitoring their employee attendance.



### SALIENT FEATURES OF TORK INCLUDES:

- **Easy Integration:** TORK can be easily integrated with existing workflow management. This avoids any complete overhaul of system. Any high end machinery or camera installation is not required.
- **Complex Shift Management:** TORK can address any complex shift management system of organisation. Be it daily shifts or shifts involving 24 hrs work schedule, TORK has solutions for every scenarios.
- **Geo-fenced:** TORK is automated geo-fenced attendance system, i.e. if required, the employees can mark their attendance from a specific location only. As TORK is geo-location based enabled, the same can be utilised to keep a track on specific location of employee from where he or she is marking attendance.
- **User friendly Dashboard:** TORK comes with a user friendly dashboard for easy navigation and maintenance of records.
- **Budget-friendly:** TORK comes up with a very budget friendly solution or implementation cost.

# TORK for Retail

## A SINGLE SOLUTION FOR KNOWING YOUR CUSTOMERS - BETTER

TORK for Retail is a unique solution developed by Softweb Technologies for retail stores and other units which receives visitor footfalls. TORK for Retail is a computer vision based solution that helps the retail store management to gain important insights about customers visiting in the store.

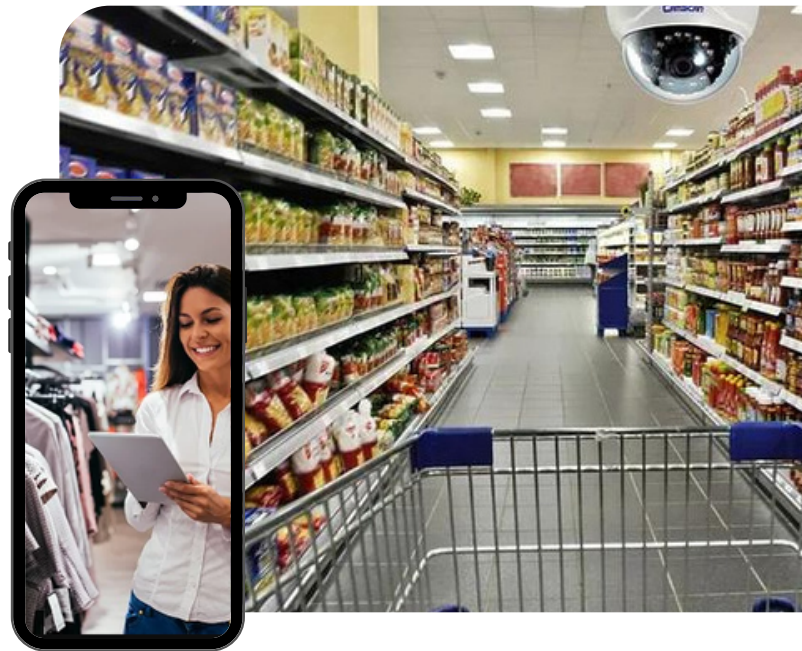
TORK for Retail, helps you understand your customers' behaviour in many levels. In this age of digitisation and e-commerce, brick and mortar stores too can access and understand the demographics of their customers visiting in store.



Gaining customer insights is a priority for every retail management authorities, which leads better data-driven results.

Retail store management authorities can also understand the peak and dull hours of the store and can make manpower planning to the optimised level.

Implementation for TORK for Retail does not involve any high end camera for data collection.



### SALIENT FEATURES OF TORK INCLUDES: EASY TO IMPLEMENT

- **Real time data:** Access real-time data about the footfall received within the store and make strategic decisions based on it.
- **Demographic Analysis:** Get a detailed analysis of the demographics of store customers. This gives retail management to understand the sex ratio visiting the store and the age group within which they fall.
- **Unique Features:** One of the unique feature TORK for Retail provides is, giving a clear understanding of dwelling time of the customer in store.
- **Resource Optimisation:** TORK for Retail helps you utilise your available resources i.e, human resource, electricity optimally, making the store more cost effective.
- **Easy Installation:** The TORK for Retail do not involve high end camera installation and cost. Keeping the store budget under control.



## TECHNOLOGY TO THE LAST MILE

BlueEye, is another indigenous solution, developed by Softweb Technologies, specifically to handle the productivity of the labour intensive industry. BlueEye is a computer vision powered facial recognition based solution, which helps you capture the productivity of plantation based labourers.

BlueEye, tagged with weightment scale, and facial recognition technology, helps you calculate the productivity, employee wise based on the facial id. Separate registration for temporary workers are not needed. This saves both time and cost of registering the temporary employee for the day.

BlueEye is a cost-friendly and budget saving solution for all plantation based industries which involves a large amount of unorganised labour sector namely, tea, coffe, rubber, jute etc.



This pioneering technology of Softweb Technologies is being used by more than 20,000 gardens across the world. BlueEye boasts of client base from as far as Mozambique in Africa to Indonesia in eastern Asia.

In India, prominent tea and coffee plantations and companies are user of BlueEye. BlueEye alone measures the productivity of 10 million users worldwide, everyday.



### SALIENT FEATURES OF TORK INCLUDES:

- **Capturing Live Weightment:** Capturing Live Weighment Data through Electronic Weighing Scales and transferring data into the application using wireless technology.
- **Authentic Attendance Capture:** Using high-end real-time Facial Recognition Technology, 100% authentic attendance data is captured & validated. This prevents gardens from registering any ghost or proxy attendance.
- **Instant MIS Report:** Empowers organizations with analytical reports for quick decision making and strategy planning.
- **Zero-Manual Intervention:** BlueEye process requires zero manual intervention for data feeding. Thus this prevents from any manipulation or misuse of data.
- **Support:** Blueeye comes with a consistent support system from softweb Technologies. Giving customers and users a complete hand-holding throughout the implementation process.

# SIM4.0

SMART & INTELLIGENT MANUFACTURING

## PROVIDE FULL VISIBILITY ACROSS YOUR PRODUCTION LINES

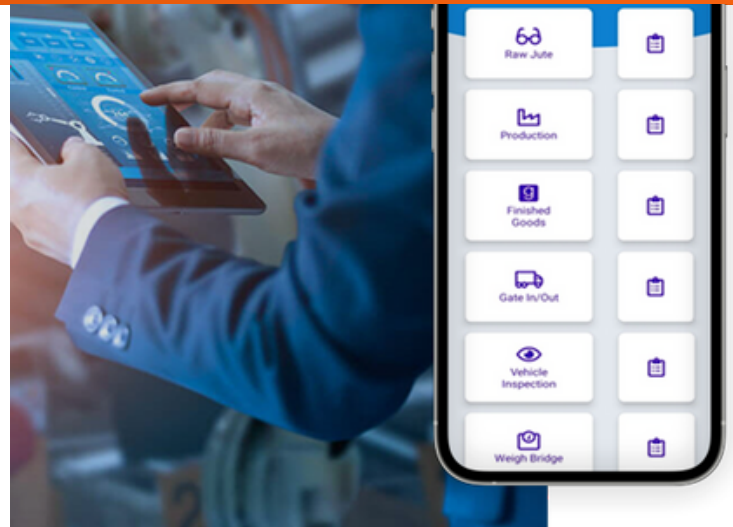
Factory Automation is the need of the time now and Softweb Technologies has developed developed Smart Factory Integration (SIM 4). SIM 4 has been designed for manufacturing industries to embrace the new industrial revolution 4.0 with ease.

Combining factory automation along with computer vision helps manufacturing units to reduce redundant operations and save man hours. SIM 4.0 creates a paperless, and digitised solution for every manufacturing units.

SIM 4.0 combines a complex set of process involving, automation, cloud computing, IoT among others to create a seamless implementation. SIM 4.0 not only enables you to understand the optimal performance of the resources.

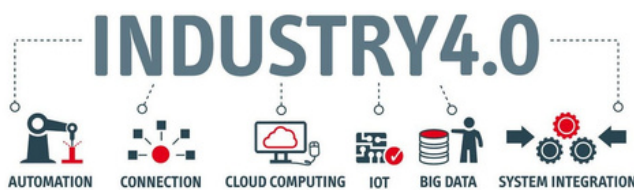
Factory Automation powered y SIM 4.0 helps you maintain consistency in production lines with reduced wastage of resources. An integrated component of operations- Man, machine and process, can be aligned with SIM 4.0 to deliver the best possible results for your manufacturing units.

Optimal Study and Predictive Analysis also helps you understand, the performance of a machine against the input of resources, understanding the optimum performance of the machine. Moreover, SIM 4.0 also provides a predictive analysis of the machinery based on previous performances.



### SALIENT FEATURES OF TORK INCLUDES: EASY TO IMPLEMENT

- **Consistent or Improved Product Quality:** SIM 4.0 powers the manufacturing units to maintain a consistency and improvement in the products. Maintaining a consistent quality of product does not seem to be impossible with SIM 4.0, and customers are satisfied, too.
- **Optimum Resource Usage:** SIM 4.0 helps you use resources like raw material or electricity to the optimum level, making production process cost effective.
- **Process Automation:** SIM 4.0 helps organisations to spot redundant jobs done manually and shift it towards automation, making the human resource involved in the process to assign with better productive job.
- **Reduction in Wastage:** A concise monitoring of the entire production process and thereafter, leads to reduction in unwanted wastage of the resources, helping the manufacturing units to become cost effective.
- **Safe Working Environment:** SIM 4.0 also helps manufacturing units to achieve a safe working environment for employees. Creating a ever motivating and healthy work environment.
- **Cost-Effectiveness:** A smart and automated factory becomes cost effective. Reduction in wastage of resources, along with optimum resource usage helps management authorities to keep a control on cost. Thus in turn increases profit maximisation.





## CASE STUDY

# BLUEEYE IN THE TEA GARDENS

One of the most labour intensive industry present at modern times is Tea industry. Right from the process of plucking tea leaves from gardens to processing and all.

The tea industry has to employ a large number of labours from unorganised sector temporarily in order to procure tea leaves for the season. The payout of these labours are often done on weekly or fortnightly basis, based on the amount of tea leaves accumulated throughout the period.

The tea garden management faced a major challenge of primarily

- Registering the temporary labour force in order to calculate their daily productivity.
- Accurately capture the procurement data of individual worker to determine their payout.
- Too much paperworks was involved from noting the total leaf procured against the worker. Reconciling the same in office records, leading to too much of clerical errors.

- The problem of ghost or proxy attendance, where the workers were not present physically, but false data got prepared in their name, incurring huge cost.

The garden authorities decided to implement BLUEEYE in their garden premises to reduce cost, record entry error, paperless environment, direct reconciliation of data in office system, and to avoid any proxy attendance.

Post implementation, the garden benefitted in number of ways. As Blueeye involves facial recognition technology, the major task of involving paperworks to register the temporary workers, every workers were identified with facial recognition. As the software is aligned with the measuring scale, the worker hangs the bag at scale and gets himself or herself identified in the app, the total quantity of leaf collected by the labour against his or her registration is automatically recorded. At the end of the day, the collected data could be reconciled in the ERP system in order to calculate the total payout of the day.

As this process involved registration through the face, any possibility of ghost attendance or proxy attendance is completely eradicated. Creating scope of minimal human intervention throughout the process, there was no chance of any data manipulation.

Authentic payout reports could be generated giving a clear picture of how many workers worked for that day, and the total produce gathered. This avoided any extra payout from the management's end saving a major monetary gain.



## CASE STUDY

### SIM4.0 IN JUTE INDUSTRY

A renowned jute factory, specialized in manufacturing high end jute products, with a legacy spanning several decades and has a strong foothold in the industry. However in recent period the company faces challenges related to operational efficiency, quality control and production costs. With Softweb Technologies as its partner, the manufacturing unit plans to implement the SIM 4.0 solutions for its premises.

The solution involved various technologies, including Internet of Things (IoT), robotics, artificial intelligence (AI), data analytics into their manufacturing process.

Solution Provided:

- **Connected Machinery and Equipments:** IoT sensors were installed to collect real-time data related to machine performance, production output, energy consumption and maintenance requirements. The data is transferred to centralized system for analysis and monitoring.

- **Predictive Maintenance:** Utilizing data analytics and AI, the smart factory automation system monitored machine performance, and detected early signs of potential failures. Predictive maintenance algorithms analyzed data to predict maintenance requirements, generate proactive maintenance reports, minimise unplanned downtime and optimise maintenance efforts.
- **Quality Control Systems:** Smart cameras and image recognition technology was implemented, to perform real-time quality inspections on jute products. The system detected defects like irregular weavings or damaged fibres, and automatically rejected faulty items.
- **Data Analytics & Optimization:** The insights derived from data help identify process bottlenecks, optimize production workflows, and make data driven decisions for continuous improvement.

**Benefits derived:** Enhanced Operational Efficiency  
SIM 4.0, helped jute manufacturing company streamline their manufacturing process and achieve higher operational efficiency.

**Improved Product Quality:** The implementation of quality control systems and real-time inspections resulted in improved product quality.

**Cost Reduction:** SIM 4.0 enabled the jute manufacturing industry to reduce production cost significantly by eliminating bottlenecks and minimizing wastage. Enhanced Safety  
The introduction of robotics and automation systems improved safety of manufacturing units.

**Competitive Advantage:** The company's ability to produce high quality jute products efficiently and cost effectively positioned them as industry leader.

# A Range of Solutions For Every Requirement





# Our Clients



Ganges Jute Pvt. Ltd.



JOONKTOLLEE  
TEA & INDUSTRIES LTD.



Group  
Cheviot



AMALGAMATED  
PLANTATIONS  
Greener Ideas Changing Lives



KANCO



THE TEA PEOPLE



SINCE 1981  
NATURALLY, THE FINEST DARJEELING TEA



(Formerly Kettlewell Bullen & Company Limited)



GROUP



BENGAL TEA & FABRICS LIMITED



Engo



LUXMI TEA



CINNATOLLI AH  
TEA LIMITED



SILVERBACK



MP BIRLA  
GROUP



ESTD. 1962  
The Dynasty of Finest Teas



Asian  
TEA GROUP



DU Digital  
Global



ORION TEA COMPANY LTD.



Warren Tea  
Limited



A BIRLA product

# Our Leaders



**VIVEK GOENKA**

FOUNDER DIRECTOR



**SANJIB BANERJEE**

C.O.O



**SAJAL GHOSH**

BUSINESS HEAD



**ANUTOSH SARKAR**

FINANCE HEAD



# Contacts

Reach out to us for  
concerns and clarifications

## India Office

“Trikut” 3rd & 4th Floors, 4C Lansdowne Place,  
Kolkata 700029, India

### Phone:

(+91) 3324769351

### Email:

[kol@softweb.co.in](mailto:kol@softweb.co.in)

### WhatsApp:

(+91) 8100710645

### Email:

[bd@softweb.co.in](mailto:bd@softweb.co.in)

### Website

<https://www.softweb.co.in/>

---

## Bangladesh Office

Softweb Technologies BD Ltd.  
47/1, Purana Paltan, Dhaka - 1000,  
Bangladesh

### WhatsApp:

(+91) 8100710645